

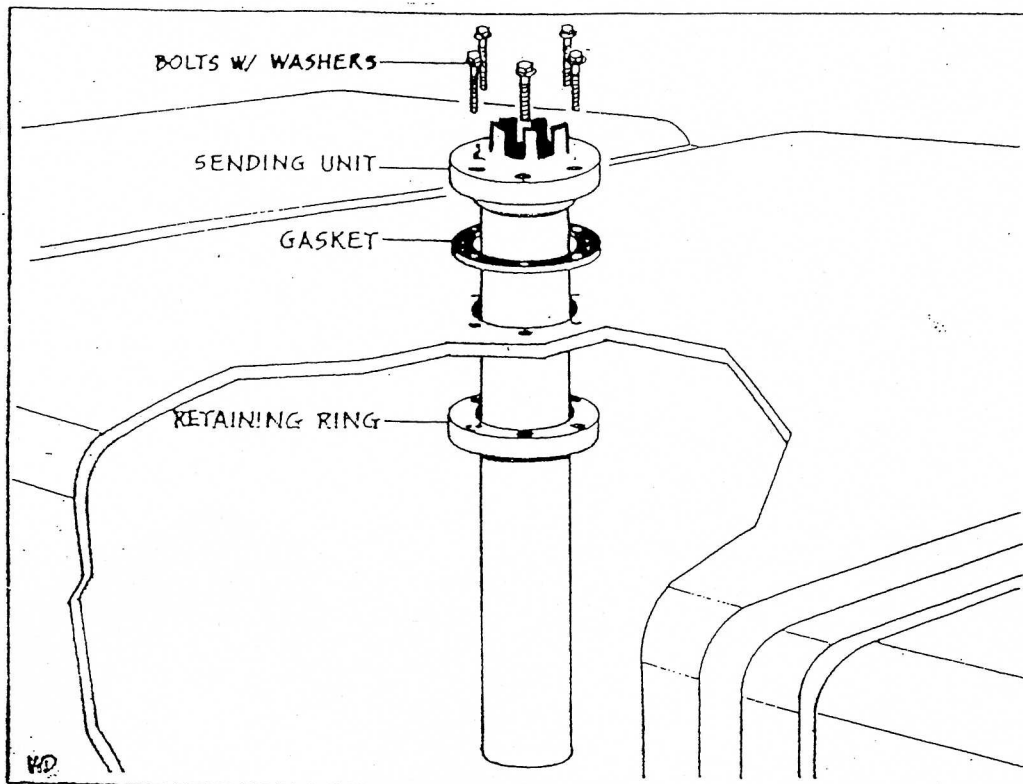
FUEL LEVEL SENDING UNIT INSTRUCTIONS

PARTS LIST

- 1 SENDING UNIT
- 1 RETAINING RING
- 1 GASKET
- 5 10x24x1-1/4" BOLTS
- 5 WASHERS

TOOLS REQUIRED

- DRILL MOTOR
- 1-1/2" HOLE SAW
- 7/32" DRILL BIT
- SCREWDRIVER



1. Unbolt cap assembly and remove foam from cell.
2. Select a flat surface on top of the cell, making sure there is adequate clearance (approximately 2") from hardware, sides of fuel cell and mount strap recesses.
3. Drill 1-1/2" hole through cell with hole saw.
4. Insert sending unit through 1-1/2" hole and use as template for drilling the 5 mounting holes.
5. Use the 7/32" drill bit to drill the mounting holes.
6. Remove sending unit and clean inside cell thoroughly. (CELL MUST BE FREE FROM SHAVINGS!!)
7. Place cork gasket onto tube of sending unit.
8. Place retaining ring through cap hole. Insert sending unit tube through drilled hole in cell and retaining ring.
9. Line up mounting holes in unit and retaining ring and thread the five 10x24x1-1/2" bolts and washers through the sender and into the retaining ring.
10. Tighten all five bolts evenly until gasket edge begins to protrude. (DO NOT OVERTIGHTEN!!)
11. Reinstall foam and cap assembly.
12. Attach wire from gauge to terminal marked S, and ground wire to the terminal marked G.

THIS SENDING UNIT IS FOR USE WITH GASOLINE ONLY. USE OF METHANOL OR FUEL ADDITIVES WILL VOID WARRANTY.